



Winix Europe 8 rue Faidherbe, 33110 Le Bouscat, France  
Website [www.winixeu.com](http://www.winixeu.com) Mail [info@winixeu.com](mailto:info@winixeu.com) Tel +33.679.243.508



POU WATER COOLER  
MODEL : W-3C, W-3D, W-3TC, W-3TD



### User's Manual

- Please read this user manual before using the machine.
- Keep this manual in a safe place for future reference.

Introduction

Installation

Operation

Maintenance

# FEATURES

## Energy Saving

Turn Water Heating or Cooling system On/Off at your convenience based upon your needs.

## Automatic water level sensor

Dual floater measures water level and let you know when to refill or reset system.

## Temperature Control

Water Temperature is continuously monitored and controlled, making Hot and Cold water available at any time.

## Hot Water Safety Switch

Safety Switch avoids unexpected use of hot water and protects against accidental burns.

## TABLE OF CONTENT

INTRODUCTION .....	3
• Safety Instructions .....	3~6
• Other recommendations .....	7
• Product and Parts views .....	8~9
PRODUCT INSTALLATION .....	10
Space selection .....	10
Tubing connection .....	11
PRODUCT OPERATIONS .....	12
• Product set-up .....	12
• Product operation .....	13
PRODUCT MAINTENANCE .....	14
Filters replacement .....	14~15
Product cleaning .....	16
Drip tray cleaning .....	17
Draining method .....	18
FAQ & Troubleshooting .....	19
Piping diagrams .....	20
Product Specifications .....	21~22

Introduction

Installation

Operation

Maintenance



# Safety Instructions



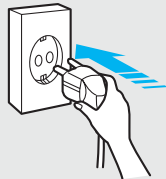
Follow these instructions to avoid any risks of injury or burn injury, equipment or property damage, electric shocks or fire hazard.



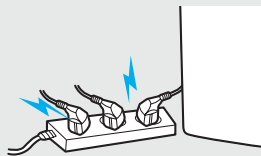
When user does not follow directions, user's injury or property damage can be occurred.

## POWER CORD and PLUG WARNING

Always plug your product into a dedicated GFCI 230V Power Outlet of at least 15 Amps, including an earth connector and connected to an electrical leakage breaker rated 30 mA or lower.



Do not plug several appliances in the same power outlet.



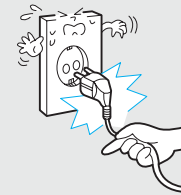
In case of loss of power due to an electrical leakage, unplug your product and contact your service dealer.



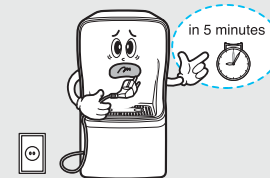
Do not bend or place any heavy objects on the power cord of your product.



Do not unplug your product by pulling on its power cord.



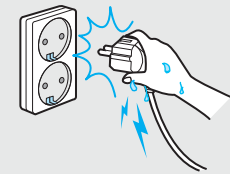
After unplugging your product, wait for 5 minutes before plugging it in again.



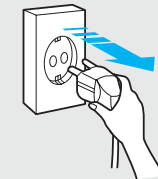
Do not set-up your product underneath a power outlet.



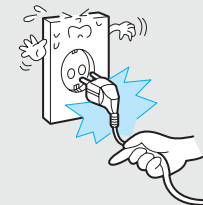
Do not touch plug with wet hands.



Always unplug your product and let it cool down for 5 minutes before cleaning it up.



Do not plug product into a loose power outlet or socket.

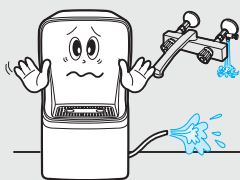


# NOTICE

## Safety Instructions

### WATER | ! NOTICE

Never use your product if water supply is not connected and open.



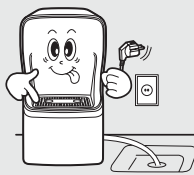
Do not place any container containing water on top of your product.



Do not directly touch the hot water coming out of your product.



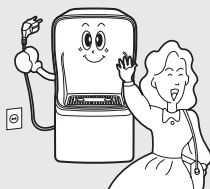
Before moving your product, always unplug it from the power outlet and drain water completely from the system.



Do not directly spray water onto your product.



If your product has not been used for an extended time, unplug it from the power outlet and drain water completely from the tubes.

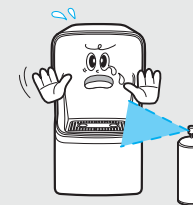


### INFLAMMABLES | ! NOTICE

Do not place inflammables such as spray, gasoline or gas near your product.

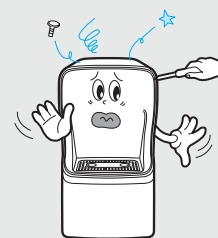


Do not spray insecticide or inflammables close to or toward your product.



### SERVICE & REPAIR | ! NOTICE

Do not attempt to repair, disassemble or modify your product. Please contact your Service Dealer when service is needed.



In case of irregular noise, smell or smoke, immediately unplug your product and contact your Service Dealer.



# NOTICE

## Safety Instructions

### OTHER RECOMMENDATIONS | NOTICE

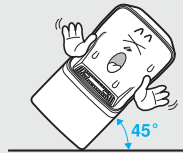
Empty drip tray frequently to avoid potential bad odors.



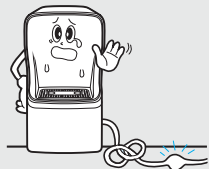
Do not place heavy objects on top of the units to avoid potential housing damages.



Never incline your product by more than 45 degrees or wait for 1 hour after doing so, before plugging it in.



Ensure that all tubing is straight, free from any obstacle and free from bending or pinching.



Do not set-up your product on an uneven surface or in a narrow space to avoid dysfunctions.



Do not connect your product water supply / inlet to a hot water source to avoid risk of damaging filters.



Do not install your product in areas with high variations of temperature



Do not knock or rock your products.

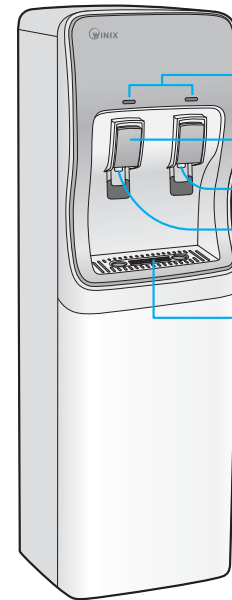


# PRODUCT AND PARTS VIEWS

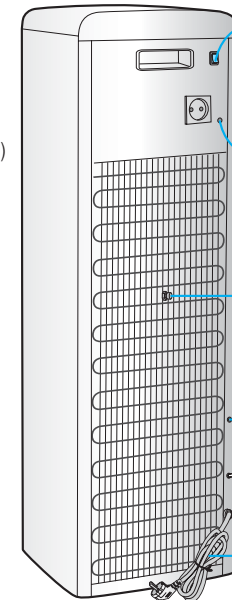
Models W-3C, W-3D

Front side

Rear side



- Display panel
- Hot water safety switch(W-3D)
- Cold water outlet
- Hot water outlet (Ambient Water Outlet)
- Drip tray

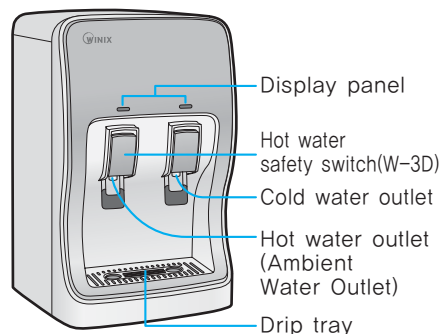


- Hot water switch (W-3D) select 'off' for cold water only, select 'on' for cold and hot water.
- Cold water temperature controller Do not control, Contact service centre.
- Hot water drain cap (W-3D)
- Water outlet for optional sink faucet
- Water supply cap
- Power cord

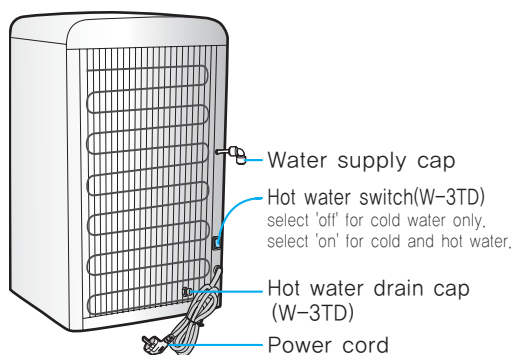
# PRODUCT AND PARTS VIEWS

Models W-3TC, W-3TD

## Front side

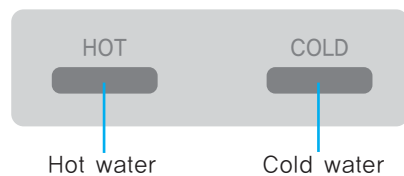


## Rear side

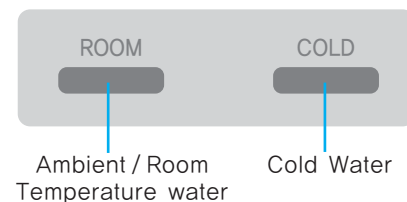


## Display panel

Models W-3TC, W-3TD

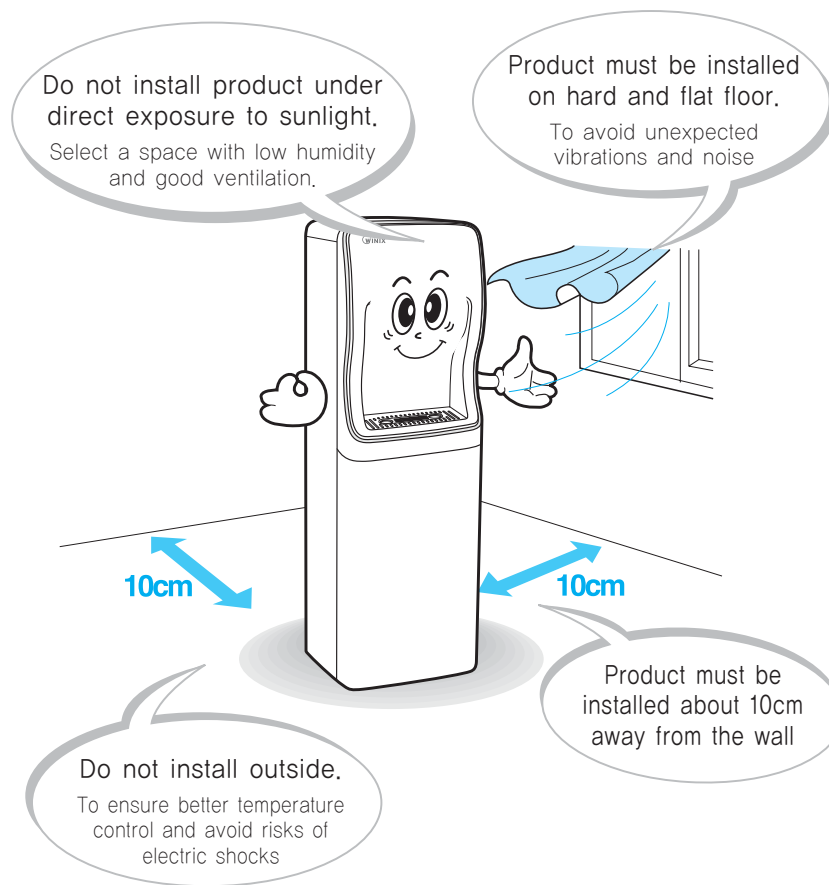


Models W-3C, W-3D



# PRODUCT INSTALLATION | SPACE SELECTION

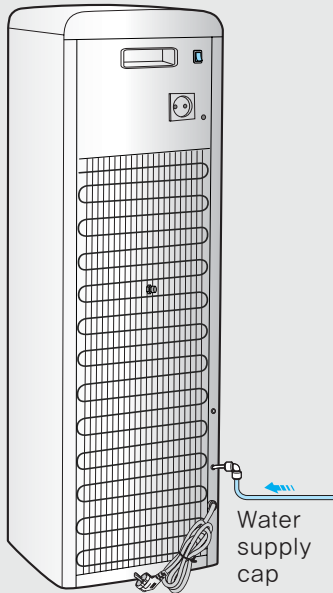
For better performances and a longer life of your product, select an adequate space to install it.



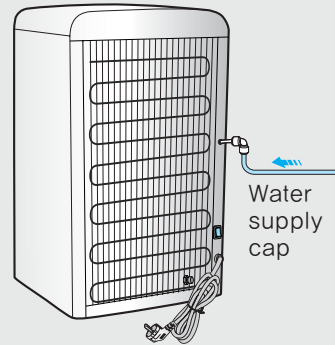
# TUBING CONNECTION

- Connection of tube | Connect supplying tube to supply hole.

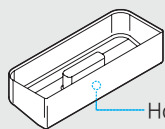
Models W-3C, W-3D



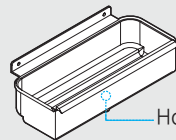
Models W-3TC, W-3TD



Models W-3C, W-3D



Hole Processing : 7Ø

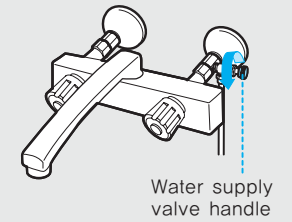


Hole Processing : 8Ø

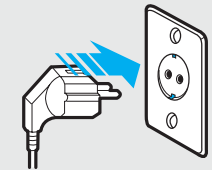
# PRODUCT SET UP

## OPERATION METHOD

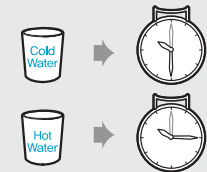
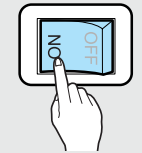
- 1 After installing your product in the right space, connect tube from Water Supply to Water Supply inlet on your product.
- 2 If you are installing an extra faucet, connect the sink tube to the sink faucet water outlet hole.
- 3 Make sure Hot Switch is Off.
- 4 Plug product in.
- 5 Make sure Water is being dispensed when pushing Hot Safety Switch.
- 6 Turn Hot Switch On.
- 7 Wait for about 15 minutes for hot water and about 30 minutes for cold water.



Water supply valve handle



HOT WATER



## OPERATION

### COLD WATER DISPENSER

- Press Cold water lever with cup for momentary water flow.
- Pull Cold water lever up for continuous water flow. Pull lever back down to stop water flow.



### HOT WATER DISPENSER

- Press Hot water lever with cup simultaneously with Hot Water Safety Switch for momentary water flow.



**Note** ▶ Continuous water flow is not available on Hot Water dispenser.

### ENERGY SAVING MODE: HOT/COLD WATER MODELS(W-3D, W-3TD)

Depending on your specific needs and natural conditions such as weather and/or seasons, you can turn Water Cooling and/or Heating systems On/Off at your convenience.



Operate the Hot/Cold Water Switch to

- ① "ON" position to get Hot/Cold Water
- ② "Off" position to get water at the temperature of the room.

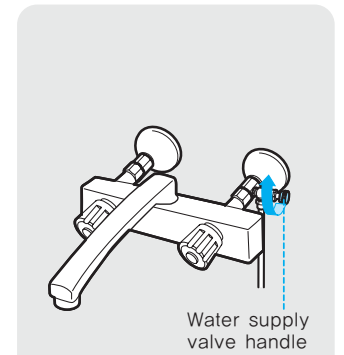


## MAINTENANCE

### OPTIONAL WATER FILTERS REPLACEMENT **Models** W-3C, W-3D

- Replace Optional water filters on a regular basis to maintain performance and efficiency of your product.

- ① Close water supply valve.



- ② Pull front cover out to take it off.
- ③ Replace old filter with a new filter.
- ④ Put front cover back by pushing it back into position.
- ⑤ Open water supply valve to resume operation



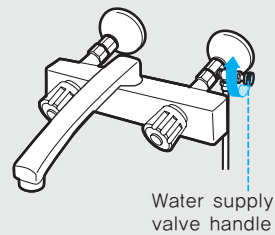


# MAINTENANCE

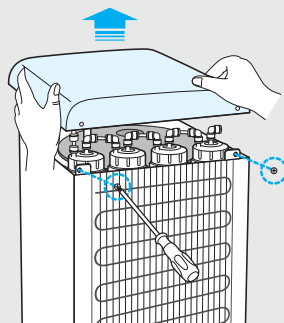
## OPTIONAL WATER FILTERS REPLACEMENT Models W-3TC, W-3TD

- Replace Optional water filters on a regular basis to maintain performance and efficiency of your product.

- 1 Close water supply valve.

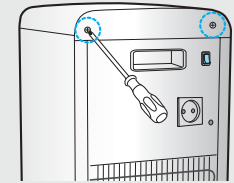


- 2 Remove 2 screws at the back of the machine to pull top cover off/upward.
- 3 Replace old filter with a new filter.
- 4 Put top cover back on top of unit.
- 5 Open water supply valve to resume operation



## INSIDE PRODUCT CLEANING (EVERY 12-13 WEEKS)

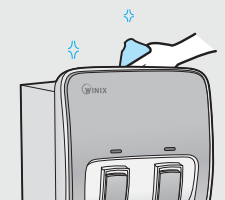
- 1 Remove screws on the back of the top housing to remove top panel.



- 2 Remove top lid cover from water tank.



- 3 Clean dirty areas with soft wet cloth.



## PRODUCT HOUSING CLEANING

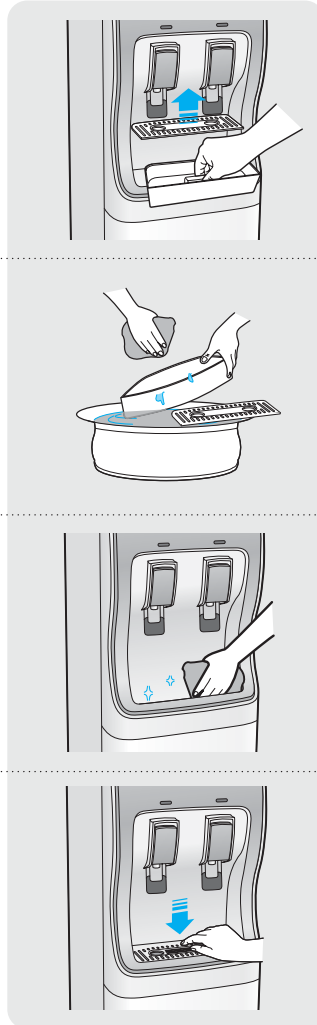
- Plastic areas : Clean with a piece of soft cloth and a neutral detergent. Do not use water.
- Metal pipes / Back of the unit : Use vacuum cleaner to get rid of dust accumulation.



# MAINTENANCE

## DRIP TRAY CLEANING

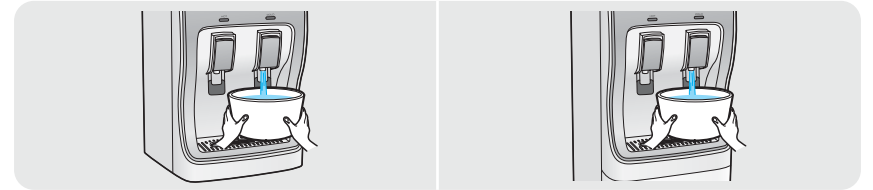
- 1 Lift drip tray off the product and dispose water.
- 2 Clean drip tray with a neutral detergent.
- 3 Clean the drip tray location, on your product, with a neutral detergent.
- 4 Place drip tray back into its original location on the product.



## DRAINING METHOD

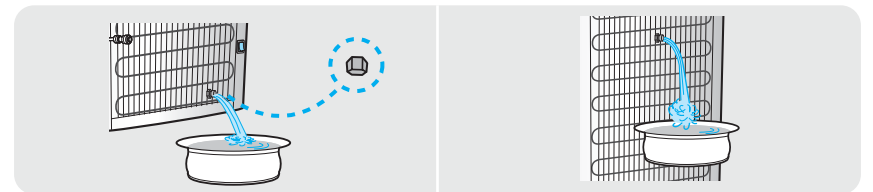
### Cold water drain

- 1 Make sure water supply valve is closed.
- 2 Place a container underneath cold water outlet.
- 3 Press cold water button to drain water.



### Hot water draining (W-3D & W-3TD)





- 1 Deactivate water heating system by turning Hot Water Switch to Off.
- 2 It is recommended to let heating system cool down for about 30 minutes and to wear protective gear to avoid risks of burn injury when draining hot water.
- 3 After heating system has cooled down, make sure Water Supply valve is closed.
- 4 Place a container below hot water drain cap at the back of the unit.
- 5 Remove hot water drain cap and drain water.
- 6 Once water stop flowing, place hot water drain cap back, open water supply valve and turn water heating system back On.

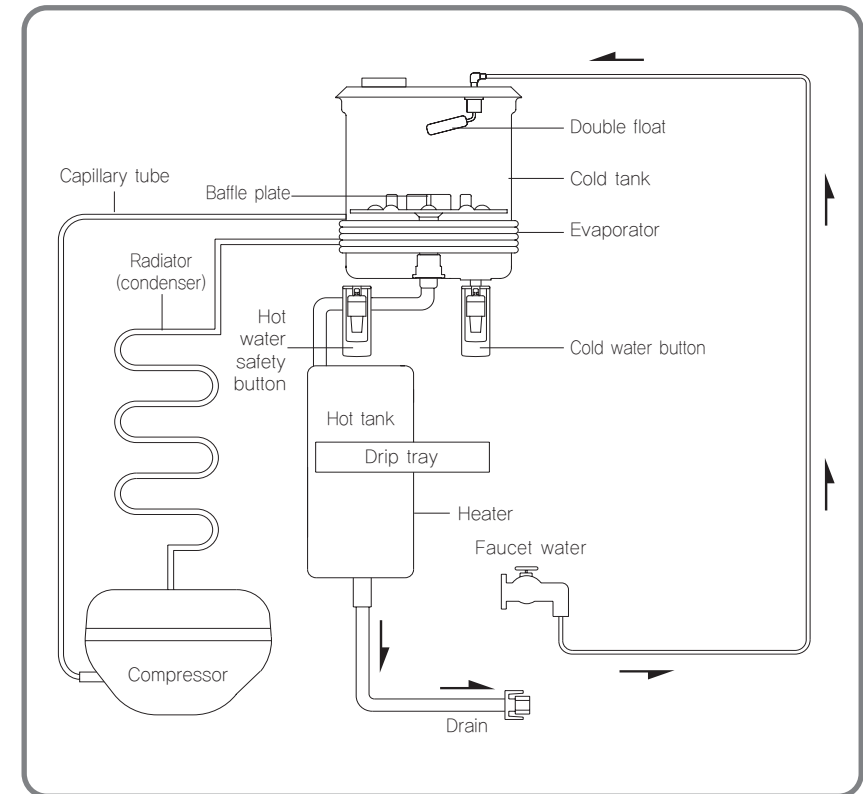


## FAQ & TROUBLESHOOTING

For any questions or concerns, please contact your Service Dealer.

## PIPING DIAGRAM

ISSUE	POTENTIAL SOLUTION
<p>Water cannot be dispensed</p> 	<ul style="list-style-type: none"> <li>▶ Make sure product is correctly plugged-in.</li> <li>▶ Make sure Water Supply valve is open.</li> <li>▶ Make sure Water Supply tubing is straight.</li> <li>▶ Make sure water level is not too high in the cold water tank</li> </ul>
<p>Hot water &amp; cold water</p> 	<p><b>Water is not cold</b></p> <ul style="list-style-type: none"> <li>▶ make sure product is plugged-in</li> <li>▶ make sure Water Cooling System switch is On</li> <li>▶ make sure you do not dispense cold water continuously and wait for 20-30 minutes before retrying</li> </ul> <p><b>Water is not hot</b></p> <ul style="list-style-type: none"> <li>▶ make sure product is plugged-in</li> <li>▶ make sure Water Heating System switch is On</li> <li>▶ make sure you do not dispense hot water continuously and wait for 5-10 minutes before retrying</li> </ul>
<p>Strange taste or smell</p> 	<ul style="list-style-type: none"> <li>▶ Make sure you use Winix Water Filters and replace them regularly.</li> <li>▶ Make sure you drain water once a month if you do not use your Water Cooler regularly</li> <li>▶ Make sure inside Cold Water tank is cleaned regularly</li> </ul>
<p>Noise or leakage</p> 	<p><b>Strange noise occurs</b></p> <ul style="list-style-type: none"> <li>▶ Make sure floor is flat and even</li> <li>▶ Make sure than no foreign object has been left on or inside the product</li> </ul> <p><b>Water Leakage</b></p> <ul style="list-style-type: none"> <li>▶ Close Water Supply and call your service dealer</li> </ul>



# PRODUCT SPECIFICATIONS

Model	W-3D	W-3C
Volt./Hz	220~240V/50Hz	
Power consumption	Cold: 80W, Hot: 450W	Cold: 80W
Cold thermostat	Automatic Temperature controller	
Hot thermostat	Automatic Temperature controller	-
Safety Thermostat	Overheat prevention sensor	-
Cold Water Temperature	4°C±4°C	
Hot Water Temperature	85°C±10°C	-
Water supply	15ℓ	
Cold Water Tank Capacity	3.2ℓ	
Hot Water Tank Capacity	2.0ℓ	-
Extraction ability	Cold water	15Cups(under 10°C, 100cc/20 sec.)
	Hot water	12Cups(over 70°C, 100cc/20 sec.)
Water Supply Pressure Range	0.5kgf/cm <sup>2</sup> - 6kgf/cm <sup>2</sup> (7.1PSI~85.3PSI)	
Water Supply Temperature Range	5 - 35°C	
Water Purification Capacity	2.0L/min(3kgf/cm <sup>2</sup> )	
Refrigerant	R-134a	
Weight	17kg	16kg
Dimensions	300(W)×440(D)×1,150(H)	

Model	W-3TD	W-3TC
Volt./Hz	220~240V/50Hz	
Power consumption	Cold: 80W, Hot: 250W	Cold: 80W
Cold thermostat	Automatic Temperature controller	
Hot thermostat	Automatic Temperature controller	-
Safety Thermostat	Overheat prevention sensor	-
Cold Water Temperature	4°C±4°C	
Hot Water Temperature	85°C±10°C	-
Water supply	15ℓ	
Cold Water Tank Capacity	3.2ℓ	
Hot Water Tank Capacity	1.0ℓ	-
Extraction ability	Cold water	15Cups(under 10°C, 100cc/20 sec.)
	Hot water	7Cups(over 70°C, 100cc/20 sec.)
Water Supply Pressure Range	0.5kgf/cm <sup>2</sup> - 6kgf/cm <sup>2</sup> (7.1PSI~85.3PSI)	
Water Supply Temperature Range	5 - 35°C	
Water Purification Capacity	2.0L/min(3kgf/cm <sup>2</sup> )	
Refrigerant	R-134a	
Weight	13.5Kg	
Dimensions	300(W)×440(D)×506(H)	